

GROUNDSPEED

QUALITY FROM THE GROUND UP[®]

PRODUCT INDEX

APPLICATION



Regional
Page 01-14



GSFS02(+)
Steer
PAGE 01-02



GSKS01(+)
Trailer
PAGE 03-04



GSVS02
Drive
PAGE 05-06



GSZS01
All Position
PAGE 07-08



GSVS04
Drive
PAGE 09-10



GSVS05
Drive
PAGE 11-12



GSFS-R01B
Steer
PAGE 13-14



Mixed Service
Page 15-20



GSZX02
All Position
PAGE 15-16



GSZX04
All Position
PAGE 17-18



GSVX02
Drive
PAGE 19-20



GSZX05
All Position
PAGE 21-22



City Bus
Page 21-22



GSZU01
All Position
PAGE 23-24



Long Haul
Page 23-24



GSKL01
Trailer
PAGE 25-26



Winter
Page 25-28



GSFW01
All Position
PAGE 27-28



GSVW01
All Position
PAGE 29-30



GROUNDSPEED TBR



GSFS02 (+)

REGIONAL



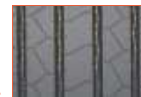
Square shoulder effectively reduces irregular wear.



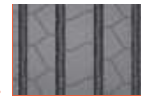
Straight main grooves reduce rolling resistance and improve drainage and handling performance.



Stone ejector eject stones, effectively prevent the bottom crack and protect the body.



Miniature sipes on groove edge improve traction performance and prevent uneven wear.



GSFS02 (+)



STEER



SIZE	LOAD INDEX	PLY RATING	SPEED RATING (MPH)	PERMITTED RIM	TREAD DEPTH	MAX LOAD SINGLE	RECOMMENDED RIM DUAL	SECTION WIDTH	OVERALL DIA	EU LABEL					
										RRC	WET	NOISE	NOISE LEVEL SNOW		
275/70R22.5	150/148	18	M	7.50-8.25	15	3350	3150	8.25	276	958	C	A	73	B	✓
295/60R22.5	150/147 (149/146)	16	K(L)	9.00-9.75	15	3350	3075	9.00	292	926	C	A	73	B	✓
295/80R22.5	154/149M	18	M	8.25-9.00	15	3750	3250	9.00	298	1044	C	A	73	B	✓
315/60R22.5	154/150 (152/148)	20	L(M)	9.00-9.75	14	3750	3350	9.75	313	950	C	A	73	B	✓
* 315/70R22.5	156/150	18	L	9.00-9.75	15	4000	3350	9.00	312	1014	C	A	73	B	✓
315/80R22.5	156/150 (154/150)	20	L(M)	9.00-9.75	15	4000	3350	9.00	312	1076	C	A	73	B	✓
* 385/55R22.5	160(158)	20	K(L)	11.75-12.25	16	4500	/	12.25	386	996	C	A	73	B	✓
* 385/65R22.5	164(158)	20	K(L)	11.75-12.25	16	5000	/	11.75	389	1072	C	A	73	B	✓

* This specification of the product includes two versions: GSFS02 and GSFS02+.

GROUNDSPEED TBR



GSKS01(+)

REGIONAL



GSKS01(+)



SIZE	LOAD INDEX	PLY RATING	SPEED RATING (MPH)	PERMITTED RIM	TREAD DEPTH	MAX LOAD SINGLE	MAX LOAD DUAL	RECOMMENDED RIM	SECTION WIDTH	OVERALL DIA	RRC	WET	EU LABEL NOISE	EU LABEL NOISE LEVEL	EU LABEL SNOW
				in	mm	kg	kg	in	mm	mm	dB				
215/75R17.5	136/134J	18	J	6.00-6.75	12.5	2240	2120	6.00	211	767	D	B	73	B	✓
235/75R17.5	143/141 (145/145)	18	J(F)	6.75-7.50	12.5	2725	2575	6.75	233	797	D	B	73	B	✓
245/70R17.5	143/141 (146/146)	18	J(F)	6.75-7.50	12.5	2725	2575	7.50	248	789	D	B	73	B	✓
• 385/55R22.5	160	20	K	11.75-12.25	16	4500	/	12.25	386	996	C	B	73	B	✓
• 385/65R22.5	164	20	K	11.75-12.25	15	5000	/	11.75	389	1072	C	A	74	B	✓
425/65R22.5	165	20	K	12.25-13.00-14.00	16.5	5150	/	12.25	422	1124	C	B	73	B	✓
445/65R22.5	169	20	K	13.00-14.00	16	5800	/	13.00	444	1150	C	B	73	B	✓

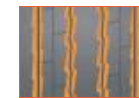
* This specification of the product includes two versions: GSKS01 and GSKS01+.



Continuous tread pattern greatly reduces rolling resistance.



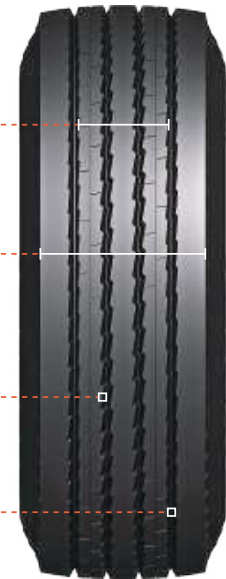
The wide tread increases the ground contact area and improves the grip.



Optimized groove wall angle effectively prevents stone and protects the body.



4 zigzag main grooves provide excellent traction and drainage performance for various road conditions.





GROUNDSPEED TBR



GSVS02

REGIONAL



The tie-bars between the pattern blocks help improve tread stability. Reduce heel to toe wear.



Full-depth horizontal grooves can quickly drain water into the main groove, improving the traction performance on the wet road.



Wide tread and deep main groove provide excellent mileage performance.



The wave groove wall design effectively prevents the stone and improves the pattern stiffness.



GSVS02



DRIVE



SIZE	LOAD INDEX	PLY RATING	SPEED RATING (MPH)	PERMITTED RIM	TREAD DEPTH	MAX LOAD SINGLE	MAX LOAD DUAL	RECOMMENDED RIM	SECTION WIDTH	OVERALL DIA	RRC	WET	EU LABEL NOISE	EU LABEL NOISE LEVEL	SNOW
				in	mm	kg	kg	in	mm	mm			dB		
205/75R17.5	124/122	14	M	5.25-6.00-6.75	15	1600	1500	6.00	204	753	D	C	74	B	✓
215/75R17.5	126/124	16	M	6.00-6.75	15	1700	1600	6.00	211	767	D	C	74	B	✓
225/75R17.5	129/127	16	M	6.00-6.75	15	1850	1750	6.75	226	783	D	A	74	B	✓
235/75R17.5	132/130	16	M	6.75-7.50	16	2000	1900	6.75	233	797	D	A	74	B	✓
245/70R17.5	136/134	16	M	6.75-7.50	16	2240	2120	7.50	248	789	D	A	74	B	✓
265/70R19.5	140/138	16	M	6.75-7.50-8.25	16	2500	2360	7.50	262	867	D	A	74	B	✓
285/70R19.5	146/144 (145/143)	16	L(M)	7.50-8.25-9.00	16	3000	2800	8.25	283	895	D	A	74	B	✓
295/60R22.5	150/147 (149/146)	16	K(L)	9.00-9.75	20	3350	3075	9.00	292	926	C	A	74	B	✓
295/80R22.5	152/148	18	M	8.25-9.00	20	3550	3150	9.00	298	1044	C	A	74	B	✓
315/60R22.5	152/148	20	L	9.00-9.75	18	3550	3150	9.75	313	950	C	A	74	B	✓
315/70R22.5	154/150	18	L	9.00-9.75	21	3750	3350	9.00	312	1014	C	A	74	B	✓
315/80R22.5	156/150 (154/150)	20	L(M)	9.00-9.75	21	4000	3350	9.00	312	1076	C	A	74	B	✓

GROUNDSPEED TBR



GSZS01



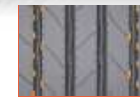
ALL POSITION

SIZE	LOAD INDEX	PLY RATING	SPEED RATING (MPH)	PERMITTED RIM	TREAD DEPTH	MAX LOAD		RECOMMENDED RIM	SECTION WIDTH	OVERALL DIA	EU LABEL				
				in	mm	kg	kg	in	mm	mm	RRC	WET	NOISE	NOISE LEVEL	SNOW
11R22.5	148/145	16	M	7.50-8.25	14	3150	2900	8.25	279	1054	/	/	/	/	/
11R24.5	149/146	16	L	7.50-8.25	14	3250	3000	8.25	279	1104	/	/	/	/	/
205/75R17.5	124/122	14	M	5.25-6.00-6.75	12	1600	1500	6.00	204	753	D	A	73	B	✓
215/75R17.5	135/133	16	L	6.00-6.75	12.5	2180	2060	6.00	211	767	D	A	72	B	✓
225/70R19.5	128/126	14	M	6.00-6.75-6.75RW	14	1800	1700	6.75	226	811	D	A	72	B	✓
225/75R17.5	129/127	16	M	6.00-6.75	12.5	1850	1750	6.75	226	783	D	A	72	B	✓
235/75R17.5	143/141	18	J	6.75-7.50	12.5	2725	2575	6.75	233	797	D	A	72	B	✓
235/75R17.5	132/130	16	M	6.75-7.50	12.5	2000	1900	6.75	233	797	D	A	72	B	✓
245/70R17.5	136/134	16	M	6.75-7.50	12.5	2240	2120	7.50	248	789	D	A	72	B	✓
245/70R19.5	135/133	16	M	6.75-7.50-7.50RW	14	2180	2060	7.50	248	839	D	A	72	B	✓
245/70R19.5	141/140	18	M	6.75-7.50-7.50RW	14	2575	2500	7.50	248	839	D	A	72	B	✓
255/70R22.5	140/137	16	L	6.75-7.50-8.25	14	2500	2300	7.50	255	930	D	A	72	B	✓
265/70R19.5	137/134	14	M	7.50-8.25RW	14.5	2300	2120	7.50	262	867	/	/	/	/	/
265/70R19.5	140/138	16	M	6.75-7.50-8.25	14.5	2500	2360	7.50	262	867	D	A	72	B	✓
275/70R22.5	148/145	18	L	7.50-8.25	15	3150	2900	8.25	276	958	/	/	/	/	/
285/70R19.5	146/144 (145/143)	16	L(M)	7.50-8.25-9.00	14	3000	2800	8.25	283	895	D	A	72	B	✓
285/75R24.5	144/141	14	L	7.50-8.25-9.00	14	2800	2575	8.25	283	1050	/	/	/	/	/
295/75R22.5	144/141	14	L	8.25-9.00	14	2800	2575	9.00	298	1014	/	/	/	/	/



GSZS01

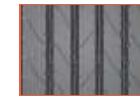
REGIONAL



Special notch design on shoulder groove wall improves traction on dry and wet.(roads)



Straight groove into curve groove wave design prevents stone and protects the body.



Shoulder sipes relieve shoulder pressure, prevent irregular wear and prolong tread life.



Miniature sipes on groove edge improve traction performance and prevent uneven wear.



SIZE	LOAD INDEX	PLY RATING	SPEED RATING (MPH)	PERMITTED RIM	TREAD DEPTH	MAX LOAD		RECOMMENDED RIM	SECTION WIDTH	OVERALL DIA
				in	mm	kg	kg	in	mm	mm
10R17.5	134/132L	16	H	6.75-7.50	15.75	2120	2000	7.50	254	858
10R22.5	144/142L	16	H	6.75-7.50	18.27	2800	2650	7.50	254	1020
12R22.5	152/148L (150/148M)	16	H	8.25-9.00	19.53	3550	3150	9.00	300	1084



GROUNDSPEED TBR



GSVS04

REGIONAL



The new block design decreases wear by reducing the ground contact area for significantly increased mileage performance.



Thanks to a higher number of gripping edges, the drive axle traction is improved.



Extra wide tread and deep grooves ensure ultra-high mileage is achieved.



Directional tread design ensures long tread Life, offers protection against irregular wear.



GSVS04



SIZE	LOAD INDEX	PLY RATING	SPEED RATING (MPH)	PERMITTED RIM	TREAD DEPTH	MAX LOAD SINGLE	MAX LOAD DUAL	RECOMMENDED RIM	SECTION WIDTH	OVERALL DIA
				in	mm	kg	kg	in	mm	mm
275/80R22.5	149/146	16	L	7.50-8.25	20	3250	3000	8.25	276	1012
295/80R22.5	152/148	18	M	8.25-9.00	21	3550	3150	9.00	298	1044

GROUNDSPEED TBR



GSVS05

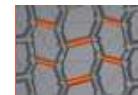
REGIONAL



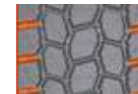
GSVS05



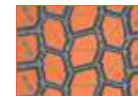
SIZE	LOAD INDEX	PLY RATING	SPEED RATING (MPH)	PERMITTED RIM	TREAD DEPTH	MAX LOAD SINGLE	MAX LOAD DUAL	RECOMMENDED RIM	SECTION WIDTH	OVERALL DIA
				in	mm	kg	kg	in	mm	mm
215/75R17.5	135/133	16	J	6.00-6.75	20	2180	2060	6.00	276	1012
235/75R17.5	143/141	18	J	6.75-7.50	21	2725	2575	6.75	298	1044



The bridge center block design helps maintain tread stability and facilitates handling.



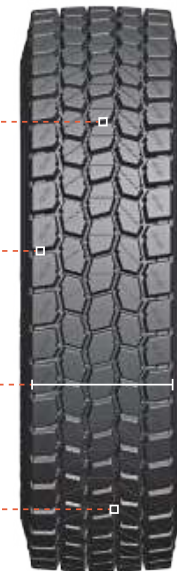
The wide open shoulder groove provides excellent traction without compromising tread life.



Optimized deep tread designed for long mileage and even wear.



V-Shaped groove design facilitates the evacuation of stones, mud and snow, providing driving confidence.





GROUNDSPEED TBR

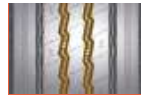


GSFS-R01B

REGIONAL



Zig-zag grooves help increase traction in new and worn tire conditions.



Micro sipes located in the groove walls can reduce irregular tire wear.



Shoulder lugs minimize irregular tread wear and extend tire life.



The five-rib design ensures even wear and improves handling.



GSFS-R01B



SIZE	LOAD INDEX	PLY RATING	SPEED RATING (MPH)	PERMITTED RIM	TREAD DEPTH	MAX LOAD SINGLE	MAX LOAD DUAL	RECOMMENDED RIM	SECTION WIDTH	OVERALL DIA
				in	mm	kg	kg	in	mm	mm
235/75R17.5	143/141	18	J	6.75-7.50	13.5	2725	2575	6.75	233	797
275/80R22.5	149/146	16	L	7.50-8.25	16	3250	3000	8.25	276	1012
295/80R22.5	152/148	18	M	8.25-9.00	17	3550	3150	9.00	298	1044
295/80R22.5	152/148	18	M	8.25-9.00	17	3550	3150	9.00	298	1044

GROUNDSPEED TBR



GSZX02

 **MIXED SERVICE**



GSZX02



SIZE	LOAD INDEX	PLY RATING	SPEED RATING (MPH)	PERMITTED RIM	TREAD DEPTH	MAX LOAD SINGLE	MAX LOAD DUAL	RECOMMENDED RIM	SECTION WIDTH	OVERALL DIA	RRC	WET	NOISE	EU LABEL NOISE LEVEL	SNOW
				in	mm	kg	kg	in	mm	mm	mm	dB			
385/65R22.5	164	20	K	11.75-12.25	15.2	5000	/	11.75	389	1072	C	B	74	B	✓
445/65R22.5	169	20	K	13.00-14.00	17	5800	/	13.00	444	1150	B	B	74	B	✓



Pattern block design and edges provide traction for both on and off application use.



The wide tread and deep grooves ensure high mileage.



Open shoulder blocks with tie-bars prevent irregular wear and provide excellent traction performance in on-off road conditions.



Stone ejectors in the middle of the main grooves prevents stone drilling.





GROUNDSPEED TBR



GSZX04

 **MIXED SERVICE**



Rugged four-rib design with special groove shape to combat stone retention for long mileage and retreadability.



V-Channels and Groove Bottom Protectors, Defend the casing against stone retention and stone-drilling.



Shoulder lugs provide grip and reduce the tread heat, prolong the life of the tread.



Zigzag groove design for true all-position use.



GSZX04



SIZE	LOAD INDEX	PLY RATING	SPEED RATING (MPH)	PERMITTED RIM	TREAD DEPTH	MAX LOAD		RECOMMENDED RIM	SECTION WIDTH	OVERALL DIA	RRC	WET	EU LABEL		
						SINGLE	DUAL						NOISE	NOISE LEVEL	SNOW
12.00R24	160/157	20	K	7.5(+)-8.50-9.0	17	4500	4125	8.50	313	1226	C	C	72	B	✓
13R22.5	156/150	20	K	9.00-9.75	18	4000	3350	9.75	320	1124	C	C	72	B	✓
315/80R22.5	156/150	20	K	9.00-9.75	15.9	4000	3350	9.00	312	1076	C	C	72	B	✓
325/95R24	162/160	22	K	8.5(+)-9.00-10.00	17	4750	4500	9.00	325	1228	C	C	72	B	✓

GROUNDSPEED TBR



GSVX02

 **MIXED SERVICE**



GSVX02



SIZE	LOAD INDEX	PLY RATING	SPEED RATING (MPH)	PERMITTED RIM	TREAD DEPTH	MAX LOAD		RECOMMENDED RIM	SECTION WIDTH	OVERALL DIA	EU LABEL				
						SINGLE	DUAL				RRC	WET	NOISE	NOISE LEVEL	SNOW
				in	mm	kg	kg	in	mm	mm			dB		
13R22.5	156/150	20	K	9.00-9.75	23	4000	3350	9.75	320	1124	D	C	74	B	✓
315/80R22.5	156/150	20	K	9.00-9.75	23	4000	3350	9.00	312	1076	D	C	74	B	✓
325/95R24	162/160K	22PR	M	8.50-9.00-10.00	20.5	4750	4500	9.00	12.80	1228	/	/	/	/	/



Wider tread size provides better mileage performance for mixed service use.



Optimised block pattern geometry ensures better traction and even wear.



Stone ejectors ensure that the stones are removed to prevent puncturing the bottom of the groove.



Shape design of the shoulder blocks supports grip and traction in mixed road conditions.





GROUNDSPEED TBR



GSZX05

 **MIXED SERVICE**



The tire features a closed shoulder design to enhance driving stability.



The shoulder lug promote even wear and help reduce tread temperature.



The stone ejectors at the groove bottom help expel trapped stones and prevent cracks at the groove base.



The three zig-zag groove design increases the number of contact intersections, thereby enhancing traction and braking performance.



GSZX05



SIZE	LOAD INDEX	PLY RATING	SPEED RATING (MPH)	PERMITTED RIM	TREAD DEPTH	MAX LOAD		RECOMMENDED RIM	SECTION WIDTH	OVERALL DIA
				in	mm	kg	kg	in	mm	mm
325/95R24	162/160K	22PR	M	8.50-9.00-10.00	17	4750	4500	9.00	325	1228
325/95R24	164/162K	24PR	n	8.50-9.00-10.00	17	5000	4750	9.00	325	1228
12.00R24	160/157K	20	l	8.00-8.50-9.00	17	4500	4125	8.50	313	1226
12R22.5	152/149K	18	j	8.25-9.00	19	3550	3250	9.00	300	1084
315/80R22.5	156/150 K	20	l	9.00-9.75	15.9	4000	3350	9.00	312	1076
13R22.5	156/150 K	20	l	9.00-9.75	18	4000	3350	9.75	320	1124



GROUNDSPEED TBR

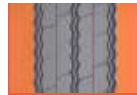


GSZU01

 CITY BUS



Optimized shoulder rib design improves handling and driving stability.



Optimised block pattern geometry ensures better traction and even wear.



Zigzag grooves together with an optimal block arrangement provide an improved traction performance.



Wide tread blocks increase the rigidity of the tyre and increase the range while reducing rolling resistance.



GSZU01



SIZE	LOAD INDEX	PLY RATING	SPEED RATING (MPH)	PERMITTED RIM	TREAD DEPTH	MAX LOAD		RECOMMENDED RIM	SECTION WIDTH	OVERALL DIA	EU LABEL				
						SINGLE	DUAL				RRC	WET	NOISE	NOISE LEVEL	SNOW
275/70R22.5	152/149	18	J	7.50-8.25	18	3550	3250	8.25	276	958	C	B	71	A	✓

GROUNDSPEED TBR



GSKL01

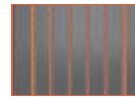
LONG HAUL



GSKL01



SIZE	LOAD INDEX	PLY RATING	SPEED RATING (MPH)	PERMITTED RIM	TREAD DEPTH	MAX LOAD SINGLE	MAX LOAD DUAL	RECOMMENDED RIM	SECTION WIDTH	OVERALL DIA	RRC	WET	EU LABEL		
													NOISE	NOISE LEVEL	SNOW
				in	mm	kg	kg	in	mm	mm			dB		
435/50R19.5	164	20	J	14.00-15.00	14	5000	/	14.00	438	931	B	B	73	B	/
445/45R19.5	164	20	J	14.00-15.00	14	5000	/	15.00	446	895	B	B	73	B	/



Adoption of optimal 6 linear grooves for maximum stability and better wet performance.



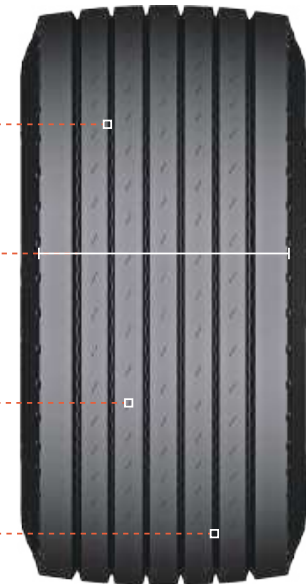
The use of wider treads provides maximum wear resistance and longer mileage.



Deeper sipe provides good heat dissipation and extends tire life.



Wave grooves provide lateral control and good rock discharge performance.





GROUNDSPEED TBR

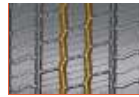


GSFW01

 WINTER



Zig-zag grooves provide excellent traction on icy and wet surfaces.



3D self-locking tread pattern offers outstanding grip and steering control.



Bridging between the tread blocks increases the overall rigidity of the blocks.



Unique semi-open shoulder design offers better traction on snowy and icy roads.



GSFW01



SIZE	LOAD INDEX	PLY RATING	SPEED RATING (MPH)	PERMITTED RIM	TREAD DEPTH	MAX LOAD SINGLE	MAX LOAD DUAL	RECOMMENDED RIM	SECTION WIDTH	OVERALL DIA	EU LABEL				
											RRC	WET	NOISE LEVEL	NOISE LEVEL	SNOW
315/70R22.5	156/150	18	L	9.00-9.75	15.9	4000	3350	9.00	312	1014	C	C	74	B	✓
315/80R22.5	156/150 (154/150)	20	L(M)	9.00-9.75	15.9	4000	3350	9.00	312	1076	C	C	74	B	✓

GROUNDSPEED TBR



GSVW01

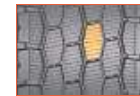
 WINTER



GSVW01



SIZE	LOAD INDEX	PLY RATING	SPEED RATING (MPH)	PERMITTED RIM	TREAD DEPTH	MAX LOAD SINGLE	DUAL	RECOMMENDED RIM	SECTION WIDTH	OVERALL DIA	RRC	WET	EU LABEL NOISE	NOISE LEVEL	SNOW
				in	mm	kg	kg	in	mm	mm	mm	dB			
315/70R22.5	154/150	18	L	9.00-9.75	19.7	3750	3350	9.00	312	1014	D	C	74	B	✓
315/80R22.5	156/150 (154/150)	20	L(M)	9.00-9.75	19.7	4000	3350	9.00	312	1076	D	C	74	B	✓



The high-density wave-shaped grooves maintain optimal snow traction and grip even after extended wear.



The zigzag traction grooves, with five zigzag, expand the contact points and enhance snow traction and braking performance.



The interconnecting stepped bridges prevent the circumferential blocks from tilting, ensuring block rigidity and improving stability at high speeds.



The wide tread design, with an improved contact shape and layout, offers better driving performance.

